

LED Flood Lighting

SFP1K5

GigaTera®
beyond light



SFP1K5 Module



SFP1K5 with Remote Aiming Box

Product Description

- Ultra-light and compact design (12.3Kg for fixed bracket type, possible to use remote steering or aiming option)
- Enable to reduce costs and load for installation substructure and mast aimed to sustainable facility
- Outstanding light distribution, highly efficient lumen output, glare-free, minimum light pollution
- Flexible options with remote or integrated driver (Wireless, DMX, DALI, Cloud)

Application

- Sports Facilities
- Airplane Hangars
- Airport Aprons
- Parking Lots
- Harbor / Yard

Certification

- ENEC, CE, CB

General Specifications

Model Name	SFP1K5
Power Consumption	Max. 1500W (1200W~1400W available by adjusting driver output)
Size (Module only)	19.33 x 14.35 x 8.09 (inch) 491 x 364.5 x 205.4 (mm)
Weight	11kg/24.2 lb excluding bracket, 12.3kg/27.1lb with bracket
Operating Temperature	-30°C ~ 50°C
Warranty	5 Years (10 years conditional warranty)
Country of Origin	GigaTera Lighting Inc. (Made in Korea)
IP Rating	IP 66
IK Rating	IK 08
Projected Area (Worst case)	Front 1.937 (ft²) / 0.180 (m²) / LED module Side 0.753 (ft²) / 0.07 (m²) / LED module
ScX (Worst case)	2.26ft²/ 0.21m² (LED module at 70° uptilting)
Operating Temperature	-22°F ~ 131°F / -30°C ~ 50°C
Operation Lifetime	> 100,000 hours (L90B10) at Ta 25°C

Remote Driver Specifications

Input Voltage	200~277Vac (277~480Vac Optional)
Input Current	Max. 8.03A (@200Vac)
	Max. 3.72A (@347Vac)
Driver Installation Type	Remote Driver Type / Rear Mounted Driver type
Power Factor	≥0.9 at Max load
Frequency	50 / 60 Hz
Surge Protection	Line – Line 20kV, Line – FG 20kV

LED Electrical Performance

LED Driving Current	1,300 mA (Max.)
LED Input Voltage	290Vdc
Light Distribution	Symmetric Wide/Medium/Narrow Beam Asymmetric Wide/Medium/Narrow Beam

Option

Control	Wired (RS-485, DMX-512, DALI), Wireless (Zigbee, Casambi) Remote Aiming Box
---------	--------------------------------------------------------------------------------

Lumen Data: Standard type

CCT	5000K (5700K, 4000K, 3000K optional)		
CRI	90 Ra	80 Ra	70 Ra
Luminous Flux *	Up to 150,000 lm	Up to 180,000 lm	Up to 202,500 lm
Luminous Efficacy *	Up to 100 lm/W	Up to 120 lm/W	Up to 135 lm/W

* Tolerance ±5%

Materials

Body	Cast Aluminum
Optic	Lens
Cover	Tempered Glass 3.2T (Clear)
Finish	Electro deposition (Black color)

Frontal Projected Area & SCx

Uptilting Angle	0°	15°	30°	45°	60°	70°	90°
FPA (m²)	0.09	0.13	0.15	0.17	0.18	0.18	0.16
SCx (m²)	0.11	0.15	0.18	0.21	0.21	0.21	0.19

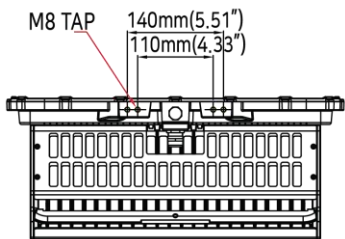
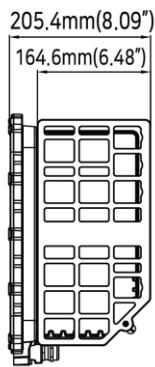
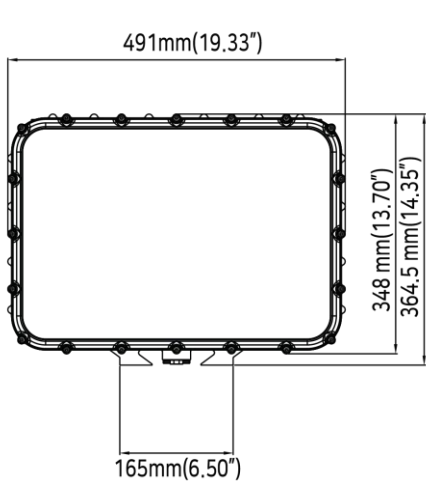
LED Flood Lighting

SFP1K5



Dimension

SFP1K5 (Single 1500W Module Only)



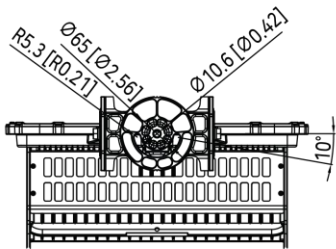
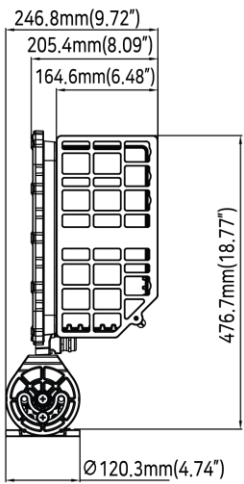
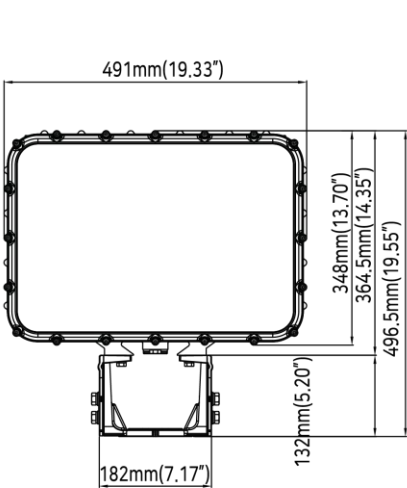
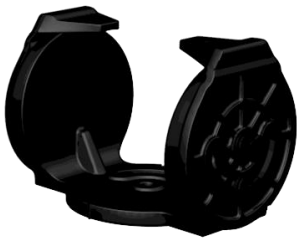
Size	19.33 x 14.35 x 8.09 (inch) / 491 x 364.5 x 205.4 (mm)
Weight	24.2 lb / 11Kg

LED Flood Lighting

SFP1K5

GigaTera[®]
beyond light

SFP1K5 (Single 1500W Module with Fixed Type Bracket)



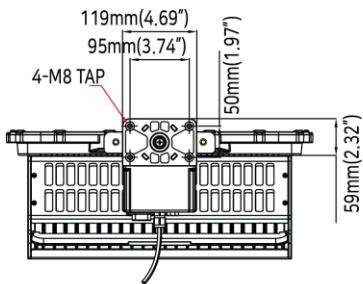
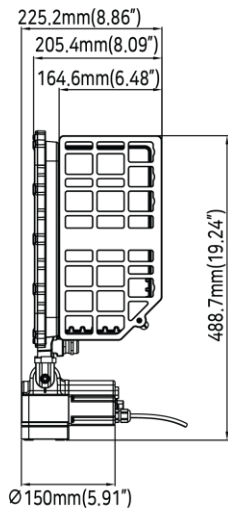
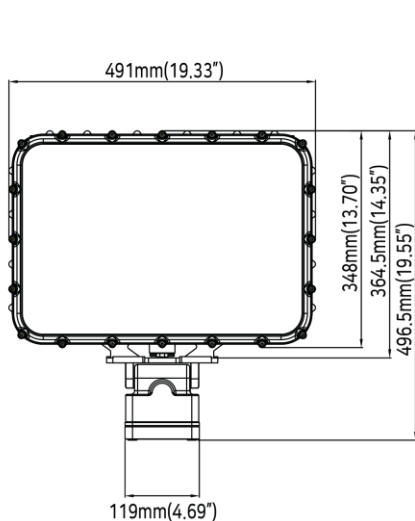
Size (Including Fixed Type Bracket)	19.33 x 19.55 x 9.72 (inch) / 491 x 496.5 x 246.8 (mm)
Weight	27.1lb / 12.3Kg

LED Flood Lighting

SFP1K5

GigaTera[®]
beyond light

SFP1K5 (Single 1500W Module with Remote Aiming Box)



Size (Including Remote Aiming Box)	19.33 x 19.55 x 8.86 (inch) / 491 x 496.5 x 225.2 (mm)
Weight	28.6lb / 13Kg